



TechSpray Sprl
Rue Ernest Matagne 32 - Module 1
5330 Assesse - BELGIUM
Phone: +32 (0) 83 65 56 08 - Fax: +32 (0) 83 67 85 05
info@techspray.be - www.techspray.be

Buses jet plat

NOZZLES

IT EN E





UGELLI A GETTO PIATTO

FLAT SPRAY NOZZLES

BOQUILLAS DE CHORRO PLANO

TESTINA DI SPRUZZO A GETTO PIATTO C1 C1 FLAT SPRAY TIPS ORIFICIOS DE PULVERIZACION DE CHORRO PLANO C1	p. 32	GETTO PIATTO DEFLESSO CD3 - DH CD3 - DH DEFLECTED FLAT SPRAY NOZZLES CHORRO PLANO POR DEFLEXION CD3-DH	p. 36
GETTO PIATTO MC2 MC2 FLAT SPRAY NOZZLES CHORRO PLANO MC2	p. 33	GETTO PIATTO DEFLESSO CD4 CD4 DEFLECTED SPRAY NOZZLES CHORRO PLANO POR DEFLEXION CD4	p. 37
GETTO PIATTO MC3 - MC3E MC3 - MC3E FLAT SPRAY NOZZLES CHORRO PLANO MC3-MC3E	p. 34	AUTOPULENTI CD6 CD6 SELF-CLEANING NOZZLES BOQUILLAS AUTOLIMPIANTES CD6	p. 38
GETTO AD ALTA PRESSIONE HP HP HIGH PRESSURE NOZZLES CHORRO PLANO PARA ALTA PRESION HP	p. 35	PER ARIA E VAPORE C5 - CD3 C5 - CD3 AIR AND STEAM NOZZLES BOQUILLAS PARA AIRE Y VAPOR C5-CD3	p. 39

Lo spruzzo a getto piatto viene ottenuto tramite un orifizio ellittico o tramite una superficie di deflessione del getto. Buona uniformità di distribuzione su tutta la sezione di spruzzo.

Materiali: Ottone e acciaio inox AISI 303.
Su richiesta AISI 316 -PVC - altri.

Filettature: Maschio gas conico (BSPT).

*This spray pattern is obtained using a particular internal elliptical vane or a deflection surface of the jet .
Good uniform spray distribution on total coverage area.*

*Materials: Brass and stainless steel AISI 303.
On request AISI 316 PVC - others.*

Thread: Male connections (BSPT).

La pulverización de chorro plano se obtiene gracias a un orificio elíptico o una superficie de deflexión del chorro. Este tipo de pulverización permite una buena uniformidad de la distribución sobre toda la sección del chorro.

*Materiales: Latón, acero inox 303.
Bajo pedido Inox 316, PVC y otros.*

Rosca: Gas (BSPT). Macho.

Legenda

Ø1 = Ø orifizio mm

∠° = angolo di spruzzo alle varie pressioni

Key

Ø1 = Ø orifice mm

∠° = spray angle at different pressure

Lista de Abreviaturas

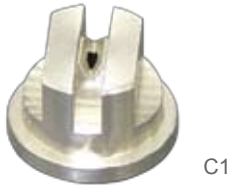
Ø1 = diámetro del orificio mm

∠° = ángulo de aspersión a distintas presiones.

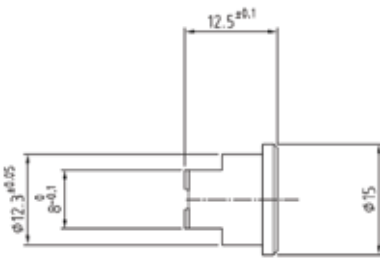


TESTINE DI SPRUZZO A GETTO PIATTO C1

C1 FLAT SPRAY TIPS
ORIFICIOS DE PULVERIZACION DE
CHORRO PLANO C1



C1



Caratteristiche

Le testine C1 possono essere in ottone Acciaio AISI 303 o AISI 316.
La loro particolare conformazione rende molto semplice la regolazione dell'orientamento dello spruzzo.
Lo spray prodotto ha gocce di piccole/medie dimensioni.
Ridotti costi di sostituzione.
Orifizio protetto dalla particolare geometria dell'ugello.
Angoli di spruzzo disponibili:
0°-15°-25°-40°-50°-65°-80°-95°-110°.
I codici contrassegnati da * sono disponibili da 0° a 65°.
Altri angoli di spruzzo sono disponibili a richiesta.

Applicazioni

- Lavaggi di ogni tipo
- Trattamenti superficiali
- Raffreddamenti
- Umidificazioni
- Lubrificazioni
- Sgrassaggi e risciacqui

Characteristics

C1 tips may be made of brass, stainless steel 303, stainless steel 316.
Their particular shape facilitates the ease to set the jet orientation.
The droplet has small/medium dimensions.
Low costs of replacement.
The orifice is protected by the particular geometry of the nozzle.
Spray angle available are: 0° - 15° - 25° - 40° - 50° - 65° - 80° - 95° - 110°.
The codes marked with * are available in 0° and 65°. Other spray angles are available on request.

Applications

- Washing
- Surface treatments
- Cooling
- Humidifying
- Lubrications
- Degreasing operation and rinse

Características

Los orificios C1 son en latón, acero AISI 303, AISI 316.
Su forma particular, hace sencillo regular la orientación de la pulverización. El spray produce pequeñas gotas de tamaño medio.
Reducción de costos de reemplazo, protegidos por el orificio de la geometría del agujero. Los ángulos de pulverización disponibles son: 0° - 15° - 25° - 40° - 50° - 65° - 80° - 95° - 110°.
Los códigos marcados con * están disponibles a 0° y 65°. Bajo pedido pueden obtenerse otros ángulos de rociado.

Aplicaciones

- Todo tipo de lavados
- Tratamiento de superficies
- Refrigeración
- Humidificación
- Lubricación
- Desengrase

Come ordinare

Es. C1-10 25° OTTONE

How to Order

E.g. C1-10 25° BRASS

Para pedidos

Ej.C1-10-25° LATON

MATERIALE	ATTACCO	MODELLO	ORIFIZIO	ANGOLO	CODICE
MATERIAL	THREAD	MODEL	FLOW ORIFICE	ANGLE	ARTICLE CODE
MATERIAL	ROSCA DE CONEXIÓN	MODELO	ORIFICIO	ANGULO	CÓDIGO
O	-	C110	-	25°	OC1102

TIPO DI UGELLO TYPE OF NOZZLE TIPOS DE BOQUILLAS	Ø1 mm	PRESSIONE - PRESSURE - PRESIÓN (bar)													
		0.5	0.7	1	1.5	2	3	4	5	6	7	10	15	20	35
		PORTATA - CAPACITY - CAUDAL (l/min)													
* 0025	0.33	-	-	-	0.07	0.08	0.11	0.12	0.13	0.14	0.15	0.18	0.22	0.25	0.33
* 0033	0.38	-	-	0.07	0.09	0.11	0.13	0.14	0.17	0.18	0.20	0.24	0.29	0.33	0.45
* 0050	0.46	-	-	0.11	0.14	0.16	0.20	0.22	0.25	0.28	0.30	0.36	0.44	0.52	0.66
* 0067	0.53	0.06	0.11	0.15	0.19	0.21	0.26	0.30	0.34	0.36	0.40	0.48	0.59	0.68	0.90
01 ⁽¹⁾	0.66	0.15	0.18	0.23	0.27	0.32	0.39	0.46	0.50	0.55	0.6	0.7	0.9	1.0	1.3
015 ⁽¹⁾	0.79	0.24	0.30	0.34	0.43	0.48	0.59	0.68	0.76	0.83	0.9	1.1	1.3	1.5	2.0
02 ⁽²⁾	0.91	0.31	0.38	0.45	0.55	0.64	0.78	0.90	1.0	1.1	1.2	1.5	1.8	2.0	2.7
03 ⁽²⁾	1.1	0.48	0.55	0.68	0.85	0.96	1.20	1.36	1.5	1.7	1.8	2.1	2.6	3.0	4.0
04 ⁽³⁾	1.3	0.64	0.75	0.9	1.1	1.3	1.6	1.8	2.0	2.2	2.4	2.9	3.5	4.0	5.3
05 ⁽³⁾	1.4	0.80	0.95	1.1	1.4	1.6	2.0	2.2	2.5	2.8	3.0	3.6	4.5	5.0	6.7
06 ⁽³⁾	1.6	0.96	1.1	1.4	1.6	1.9	2.3	2.8	3.0	3.3	3.6	4.3	5.3	6.1	8.0
08 ⁽¹⁾	1.8	1.2	1.6	1.8	2.2	2.6	3.2	3.6	4.0	4.4	4.8	5.7	7.0	8.1	10.7
10	2.0	1.5	2.0	2.3	2.8	3.2	3.9	4.6	5.0	5.5	6.0	7.1	8.8	10.1	13.5
15	2.4	2.4	2.8	3.4	4.2	4.8	5.9	6.8	7.6	8.3	9.0	10.7	13.0	15.2	20.0
20	2.8	3.2	3.8	4.5	5.5	6.4	7.8	9.0	10.1	11.1	11.9	14.2	17.5	20.0	27.0
30	3.6	4.8	5.5	6.8	8.0	9.6	11.7	13.6	15.1	16.5	17.8	21.0	26.0	30.2	40.0
40	4.0	6.4	7.5	9.0	10.8	12.8	15.6	18.0	20.0	22.0	24.0	29.0	35.0	40.0	53.0
50	4.4	8.0	9.5	11.3	13.5	16.0	19.5	22.6	25.2	28.0	30.0	36.0	44.0	50.5	67.0
60	4.8	9.6	11.3	13.5	16.5	19.2	23.1	27.0	30.0	33.0	36.1	43.0	53.0	61.0	80.0
70	5.2	11.2	13.3	15.8	19.3	22.0	27.0	31.6	35.0	39.0	42.0	50.0	61.0	71.0	94.1

* materiali su richiesta - material on request - bajo pedido

⁽¹⁾ ugelli disponibili anche in materiale plastico con angoli di spruzzo 110° - nozzles also available plastic made with 110° spray angle - boquillas disponibles tambien en material plastico con angulo de 110°

⁽²⁾ ugelli disponibili anche in materiale plastico con angoli di spruzzo 80° e 110° - nozzles also available plastic made with 80° and 110° spray angle - boquillas disponibles tambien en material plastico con angulo de 80° y 110°

GETTO PIATTO MC-2

M-C2 FLAT SPRAY NOZZLES
CHORRO PLANO MC2



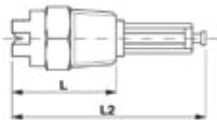
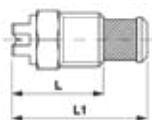
M-C2



FILTRO M7
M7 FILTER
FILTRO M7



FILTRO
FILTER
FILTRO



Caratteristiche

- Ugello per basse portate a corpo unico, attacco maschio con o senza filtro
- Angoli di spruzzo disponibili:
0° - 15° - 25° - 40° - 50° - 65° - 80° - 95° - 110°

Applicazioni

- Lavaggi
- Raffreddamenti
- Lubrificazioni
- Trattamenti superficiali

Come ordinare

Es. 1/4" MC2 04 65° OTTONE

Characteristics

- Low capacities nozzle one piece construction, male connection with/ without M7 plastic filter for 1/8 nozzle, while Brass or SS filter for 1/4 nozzle
- Available spray angles:
0° - 15° - 25° - 40° - 50° - 65° - 80° - 95° - 110°

Applications

- Washing
- Cooling
- Lubrications
- Surface treatments

How to Order

E.g. 1/4" MC2 04 65° BRASS

Características

- Boquilla para bajo caudal. Boquilla en una sola pieza. Rosca de Conexión macho con o sin filtro
- Angulos de aspersión posibles: 0° - 15° - 25° - 40° - 50° - 65° - 80° - 95° - 110°

Aplicaciones

- Lavado
- Enfriamiento
- Lubricación
- Tratamiento de superficies

Para pedidos

Ej. 1/4" MC2 04 65° LATON

MATERIALE MATERIAL MATERIAL	ATTACCO THREAD ROSCA DE CONEXIÓN	MODELLO MODEL MODELO	ORIFIZIO FLOW ORIFICE ORIFICIO	ANGOLO ANGLE ANGULO	CODICE ARTICLE CODE CÓDIGO
O	1	MC204	-	65°	O1MC2046

DIMENSIONI - DIMENSIONS - DIMENSIONES (mm)

Ø	L	L1	L2
1/8	22	36	42,5
1/4	23,5	41	-

TIPO DI UGELLO TYPE OF NOZZLE TIPOS DE BOQUILLAS	Ø1 mm	PRESSIONE - PRESSURE - PRESIÓN (bar)										
		1	2	3	4	5	6	7	10	20	35	
		PORTATA - CAPACITY - CAUDAL (l/min)										
* 1/8 M - C2 - 0050	* 1/4 M - C2 - 0050	0.46	0.11	0.16	0.20	0.22	0.25	0.28	0.30	0.35	0.52	0.66
* 1/8 M - C2 - 0067	* 1/4 M - C2 - 0067	0.53	0.15	0.21	0.26	0.30	0.34	0.36	0.40	0.48	0.68	0.90
1/8 M - C2 - 01	1/4 M - C2 - 01	0.66	0.23	0.32	0.39	0.46	0.50	0.55	0.60	0.70	1.00	1.30
1/8 M - C2 - 015	1/4 M - C2 - 015	0.79	0.34	0.48	0.59	0.68	0.76	0.83	0.90	1.10	1.50	2.00
1/8 M - C2 - 02	1/4 M - C2 - 02	0.91	0.45	0.64	0.78	0.90	1.00	1.10	1.20	1.50	2.00	2.70
1/8 M - C2 - 03	1/4 M - C2 - 03	1.1	0.68	0.96	1.20	1.36	1.50	1.70	1.80	2.10	3.00	4.00
1/8 M - C2 - 04	1/4 M - C2 - 04	1.3	0.90	1.30	1.60	1.80	2.00	2.20	2.40	2.90	4.00	5.30
1/8 M - C2 - 05	1/4 M - C2 - 05	1.4	1.10	1.60	2.00	2.20	2.50	2.80	3.00	3.60	5.00	6.70
1/8 M - C2 - 06	1/4 M - C2 - 06	1.6	1.40	1.90	2.30	2.80	3.00	3.30	3.60	4.30	6.10	8.00
1/8 M - C2 - 08	1/4 M - C2 - 08	1.8	1.80	2.60	3.2	3.60	4.08	4.40	4.80	5.70	8.10	10.70
1/8 M - C2 - 10	1/4 M - C2 - 10	2.0	2.30	3.20	3.90	4.60	5.00	5.50	6.00	7.10	10.10	13.50
1/8 M - C2 - 15	1/4 M - C2 - 15	2.4	3.40	4.80	5.90	6.80	7.60	8.30	9.00	10.70	15.20	20.00

* materiali su richiesta - material on request - bajo pedido



GETTO PIATTO M-C3 - M-C3E

M-C3 M-C3E FLAT SPRAY NOZZLES
CHORRO PLANO MC3-MC3E



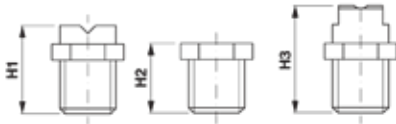
1/8 MC3E
1/4 MC3E



3/8 MC3E



3/8 MC3
1/2 MC3
3/4 MC3



Caratteristiche

- Ugello per basse portate a corpo unico, attacco maschio
- Angoli di spruzzo disponibili:
0° - 15° - 25° - 40° - 50° - 65° - 80° - 95° - 110°

Applicazioni

- Lavaggi industriali
- Trattamento superficiale metalli
- Lavaggio inerti
- Raffreddamenti
- Sgrassaggi

Come ordinare

Es. 1/8" MC3E 06 80° INOX

Characteristics

- Low capacities nozzle one piece construction, male connection
- Available spray angles:
0° - 15° - 25° - 40° - 50° - 65° - 80° - 95° - 110°

Applications

- Industrial washing
- Metal surface treating
- Coal and gravel washing
- Cooling
- Degreasing

How to Order

E.g. 1/8" MC3E 06 80° SS303

Características

- Boquillas en una sola pieza. Rosca de Conexión macho
- Angulos de aspersión posibles:
0° - 15° - 25° - 40° - 50° - 65° - 80° - 95° - 110°

Aplicaciones

- Lavados industriales
- Tratamiento de superficies
- Enfriamiento
- Desengrase
- Lavado inerte

Para pedidos

Ej. 1/8" MC3E 06 80° ACERO

MATERIALE	ATTACCO	MODELLO	ORIFIZIO	ANGOLO	CODICE
MATERIAL	THREAD	MODEL	FLOW ORIFICE	ANGLE	ARTICLE CODE
MATERIAL	ROSCA DE CONEXIÓN	MODELO	ORIFICIO	ANGULO	CÓDIGO

I 0 MC3E06 - 80° I0MC3E08

DIMENSIONI - DIMENSIONS - DIMENSIONES (mm)

Ø	H1	*H2	H3
1/8	19,5	-	-
1/4	19,5	-	-
3/8	-	15	32
1/2	-	-	32
3/4	-	-	50
1 - 1 1/4	-	-	60

TIPO DI UGELLO

TYPE OF NOZZLE

TIPOS DE BOQUILLAS

PRESSIONE - PRESSURE - PRESIÓN (bar)

Ø1 mm

1 2 3 4 5 6 7 10 15 20 30 35

PORTATA - CAPACITY - CAUDAL (l/min)

1/8 MC3 - 03	1/4 MC3E - 03	1.1	0.68	0.96	1.2	1.35	1.50	1.7	1.8	2.1	2.55	3.1	3.7	4.0
1/8 MC3 - 04	1/4 MC3E - 04	1.3	0.9	1.3	1.6	1.8	1.96	2.2	2.5	2.9	3.5	4.1	5.0	5.4
1/8 MC3 - 06	1/4 MC3E - 06	1.6	1.4	1.9	2.3	2.8	3.1	3.3	3.6	4.3	5.3	6.1	7.4	8.0
1/8 MC3 - 08	1/4 MC3E - 08	1.8	1.8	2.6	3.2	3.6	4.1	4.4	4.8	5.7	7.0	8.1	9.9	10.6
1/8 MC3 - 10	1/4 MC3E - 10	2.0	2.3	3.2	3.9	4.6	5.0	5.5	6.0	7.1	8.8	10.2	12.5	13.5
1/8 MC3 - 15	1/4 MC3E - 15	2.4	3.4	4.8	5.9	6.8	7.5	8.3	9.0	10.6	13.0	15.1	18.5	20.0
1/8 MC3 - 20	1/4 MC3E - 20	2.8	4.5	6.5	7.8	9.0	10.1	11.0	12.0	14.4	17.5	20.0	25.0	27.1
1/8 MC3 - 30	1/4 MC3E - 30	3.6	6.8	9.5	11.7	13.6	15.0	16.5	17.9	21.0	26.1	30.0	37.1	39.9
1/8 MC3 - 40	1/4 MC3E - 40	4.0	9.0	12.8	15.7	18.0	20.0	22.0	23.9	29.0	35.0	40.1	50.0	52.9
	1/4 MC3E - 50	4.4	11.3	16.0	19.5	22.6	24.8	28.0	29.8	36.0	44.1	50.9	62.1	67.0
	1/4 MC3E - 60	4.8	13.5	19.0	23.0	27.0	30.1	33.2	36.0	43.1	52.9	61.0	74.2	80.0
	1/4 MC3E - 70	5.2	15.8	22.0	27.0	31.6	34.8	39.0	42.0	50.1	61.0	71.0	86.8	94.0
	1/4 MC3E - 80	5.4	18.1	26.0	31.0	36.2	40.2	44.0	47.7	57.0	70.1	81.0	99.0	107
3/8 MC3 - 10	*3/8 MC3E - 10	2.0	2.3	3.2	3.9	4.6	5.0	5.5	6.0	7.1	8.8	10.2	12.5	13.5
3/8 MC3 - 15	*3/8 MC3E - 15	2.4	3.4	4.8	5.9	6.8	7.5	8.3	9.0	10.6	13.0	15.1	18.5	20.0
3/8 MC3 - 20	*3/8 MC3E - 20	2.8	4.5	6.5	7.8	9.0	10.1	11.0	12.0	14.4	17.5	20.0	25.0	27.1
3/8 MC3 - 30	*3/8 MC3E - 30	3.6	6.8	9.5	11.7	13.6	15.0	16.5	17.9	21.0	26.1	30.0	37.1	39.9
3/8 MC3 - 40	*3/8 MC3E - 40	4.0	9.0	12.8	15.7	18.0	20.0	22.0	23.9	29.0	35.0	40.1	50.0	52.9
3/8 MC3 - 50	*3/8 MC3E - 50	4.4	11.3	16.0	19.5	22.6	24.8	28.0	29.8	36.0	44.1	50.9	62.1	67.0
3/8 MC3 - 60	*3/8 MC3E - 60	4.8	13.5	19.0	23.0	27.0	30.1	33.2	36.0	43.1	52.9	61.0	74.2	80.0
3/8 MC3 - 70	*3/8 MC3E - 70	5.2	15.8	22.0	27.0	31.6	34.8	39.0	42.0	50.1	61.0	71.0	86.8	94.0
3/8 MC3 - 100	*3/8 MC3E - 100	6.4	23.0	32.0	39.0	46.0	50.0	54.0	60.0	71.0	88.0	100	124	134
3/8 MC3 - 120	*3/8 MC3E - 120	7.0	27.0	38.0	46.0	54.0	60.0	66.0	72.0	85.0	105	121	142	160
1/2 MC3 - 15		2.4	3.4	4.8	5.9	6.8	7.5	8.3	9.0	10.8	13.0	15.1	18.5	20.0
1/2 MC3 - 50		4.4	11.3	16.0	19.5	22.6	24.8	28.0	29.8	36.0	44.1	50.9	62.1	67.0
1/2 MC3 - 60		4.8	13.5	19.0	23.0	27.0	30.1	33.2	36.0	43.1	52.9	61.0	74.2	80.0
1/2 MC3 - 100		6.4	23.0	32.0	39.0	46.0	50.0	54.0	60.0	71.0	88.0	100	124	134
1/2 MC3 - 150		7.5	34.0	48.0	59.5	68.0	75.0	83.0	91.0	107	130	152	186	200
1/2 MC3 - 200		8.7	45.0	64.2	75.5	90.0	100	110	120	143	175	200	245	265
*3/4 MC3 - 200		8.7	45	64	75	90	100	110	120	143	175	200	245	265
*3/4 MC3 - 250		9.5	56	80	98	112	125	138	149	180	220	250	311	335
*3/4 MC3 - 350		11.1	79	112	137	158	176	194	210	250	305	356	435	469
*3/4 MC3 - 400		11.8	90	127	156	180	200	220	239	285	350	404	495	530
*1 MC3 - 500		13.1	113	180	195	228	250	276	300	355	436	510	620	670
*1 MC3 - 580		14.0	131	185	225	262	291	322	345	415	510	590	721	779



UGELLI A GETTO PIATTO FLAT SPRAY NOZZLES BOQUILLAS DE CHORRO PLANO

GETTO AD ALTA PRESSIONE HP

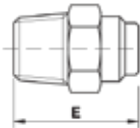
HP HIGH PRESSURE NOZZLES
CHORRO PLANO PARA ALTA PRESION HP



1/8 HP
1/4 HP



1/8 HP 0°
1/4 HP 0°



Caratteristiche

Gli ugelli ad alta pressione della nuova generazione a getto piatto o rettilineo tipo HP a corpo unico garantiscono la massima precisione e il più alto impatto grazie a una speciale lavorazione e ad un particolare trattamento antiusura. Orifizio protetto da urti accidentali.

Applicazioni

- Idropultrici
- Lavaggi industriali

Come ordinare

Es. 1/8" HP 03 25°

Characteristics

High pressure flat or solid stream spray nozzles, HP/HPP one piece type, guarantee best precision and high impact owing to a special machining and to a special surface treatment for longer wear life. The orifice is protected from crashes and damages.

Applications

- High pressure cleaning machines
- Industrial washing

How to Order

E.g. 1/8" HP 03 25°

Características

Las boquillas de chorro plano o rectilíneo del tipo HP, garantizan una precisión óptima, así como un fuerte impacto, gracias a un mecanizado preciso y un tratamiento de superficie antidesgaste particular. Orificio protegido contra choques accidentales.

Aplicaciones

- Máquinas de lavado de alta presión
- Lavados industriales

Para pedidos

Ej. 1/8" HP 03 25°

MATERIALE	ATTACCO	MODELLO	ORIFIZIO	ANGOLO	CODICE
MATERIAL	THREAD	MODEL	FLOW ORIFICE	ANGLE	ARTICLE CODE
MATERIAL	ROSCA DE CONEXIÓN	MODELO	ORIFICIO	ANGULO	CÓDIGO
-	0	HP03	-	25°	0HP032

DIMENSIONI - DIMENSIONS - DIMENSIONES (mm)

Ø	L	E
1/8	22	23
1/4	22	23

TIPO TYPE TIPOS	HP 0°		HP 15° - 25° 40° - 50° - 65°		Ø1 mm	PRESSIONE - PRESSURE - PRESIÓN (bar)								
	1/8	1/4	1/8	1/4		20	40	60	80	100	120	150	200	250
						PORTATA - CAPACITY - CAUDAL (l/min)								
015	●	●	-	-	0.80	1.5	2.1	2.6	3.0	3.4	3.7	4.1	4.8	5.3
02	●	●	●	●	0.90	2.0	2.9	3.5	4.0	4.5	6.0	5.5	6.4	7.1
025	●	●	●	●	1.00	2.6	3.6	4.4	5.1	5.7	6.3	7.0	8.1	9.0
03	●	●	●	●	1.10	3.1	4.3	5.3	6.1	6.9	7.5	8.4	9.7	10.8
035	●	●	●	●	1.15	3.6	5.1	6.3	7.3	8.1	8.9	10.0	11.5	12.8
04	●	●	●	●	1.20	4.1	5.8	7.1	8.2	9.1	10.0	11.2	12.9	14.4
045	●	●	●	●	1.30	4.6	6.5	7.9	9.2	10.2	11.2	12.6	14.5	16.2
05	●	●	●	●	1.35	5.1	7.2	8.8	10.2	11.4	12.4	13.9	16.1	18.0
055	●	●	●	●	1.40	5.6	7.9	9.7	11.2	12.5	13.7	15.3	17.7	19.8
06	●	●	●	●	1.50	6.1	8.6	10.6	12.2	13.6	15.0	16.7	19.3	21.6
065	●	●	●	●	1.55	6.6	9.4	11.5	13.3	14.8	16.3	18.2	21.0	23.5
07	●	●	●	●	1.60	7.3	10.3	12.6	14.5	16.3	17.8	20.0	23.0	25.7
075	●	●	●	●	1.65	7.6	10.7	13.1	15.2	17.0	18.6	20.8	24.0	26.8
08	●	●	●	●	1.70	8.2	11.6	14.2	16.4	18.4	20.1	22.5	26.0	29.0
085	●	●	●	●	1.75	8.5	12.1	14.8	17.1	19.0	21.0	23.4	27.0	30.2
09	●	●	●	●	1.80	9.2	13.0	15.9	18.3	20.5	22.5	25.1	29.0	32.4
10	●	●	●	●	1.90	10.1	14.3	17.5	20.2	22.6	24.8	27.7	32.0	35.8
13	-	●	-	●	2.20	13.0	18.3	22.5	25.9	29.0	31.8	35.5	41.0	45.8
15	-	●	-	●	2.40	15.2	21.5	26.3	30.4	34.0	37.2	41.6	48.0	53.7
20	-	●	-	●	2.70	20.1	28.4	34.8	40.2	44.9	49.2	55.0	63.5	71.0
25	-	●	-	●	3.00	25.3	35.7	43.8	50.6	56.6	62.0	69.3	80.0	89.4
30	-	●	-	●	3.30	30.2	42.7	52.3	60.4	67.5	74.0	82.7	95.5	106.8
40	-	●	-	●	3.80	40.2	56.8	69.6	80.3	89.8	98.4	110.0	127	142.0
50	-	●	-	●	4.20	50.0	70.7	86.5	100	111.7	122.4	136.8	158	176.6
60	-	●	-	●	4.70	61.0	86.0	105	121	136	149	166.2	192	214.7



GETTO PIATTO DEFLESSO CD3 - DH

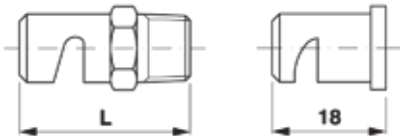
CD3 - DH DEFLECTED FLAT SPRAY NOZZLES
CHORRO PLANO POR DEFLEXION CD3-DH



CD3



DH



Caratteristiche

Angolo di spruzzo molto ampio a basso impatto. Tipo CD3 a corpo unico attacco maschio. Tipo DH testina di spruzzo assemblabile con gli accessori.

Applicazioni

- Raffreddamenti
- Lavaggio film
- Antincendio
- Lubrificazioni
- Umidificazione feltri

Come ordinare

Es. 1/8" CD3 1.5 OTTONE

Characteristics

Very wide spray angle with low impact. CD3 type one piece nozzle male connection. DH tip can be assembled with accessories.

Applications

- Cooling
- Film washing
- Fire protection
- Lubrications
- Felts humidifying

How to Order

E.g. 1/8" CD3 1.5 BRASS

Características

Angulo de aspersión muy abierto con bajo impacto. Tipo CD3 de cuerpo único, rosca de conexión macho. Tipo DH: orificio de pulverización para ensamblaje junto con los accesorios.

Aplicaciones

- Enfriamiento
- Lavado de películas
- Protección contra incendios
- Lubricación
- Humidificación

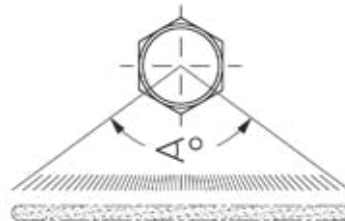
Para pedidos

Ej. 1/8" CD3 1.5 LATON

MATERIALE MATERIAL MATERIAL	ATTACCO THREAD ROSCA DE CONEXIÓN	MODELLO MODEL MODELO	ORIFIZIO FLOW ORIFICE ORIFICIO	ANGOLO ANGLE ANGULO	CODICE ARTICLE CODE CÓDIGO
O	0	CD315	-	-	O0CD315

DIMENSIONI - DIMENSIONS - DIMENSIONES (mm)

Ø	L max	
	CD3	DH
1/8	31	31
1/4	34	34
3/8	45	45
1/2	50	50
3/4	65	65
1	90	90



TIPO DI UGELLO TYPE OF NOZZLE TIPOS DE BOQUILLAS	Ø1 mm	PRESSIONE - PRESSURE - PRESIÓN (bar)										bar		
		0.2	0.35	0.5	0.7	1	1.5	2	3	4	0.5	1.5	5	
		PORTATA - CAPACITY - CAUDAL (l/min)										°	°	°
* 1/8 - CD3 - 0.50 - DH - 0.50	0.6	-	-	-	-	0.23	0.28	0.33	0.40	0.46	-	89	122	
* 1/8 - CD3 - 0.75 - DH - 0.75	0.71	-	-	-	0.28	0.34	0.43	0.48	0.59	0.68	-	106	125	
1/8 - CD3 - 1 - DH - 1	0.84	-	-	-	0.38	0.45	0.55	0.66	0.78	0.90	-	109	126	
1/8 - CD3 - 1.5 - DH - 1.5	1.0	-	-	0.50	0.57	0.68	0.85	0.95	1.20	1.36	84	114	135	
1/8 - CD3 - 2 - DH - 2	1.2	-	-	0.65	0.76	0.90	1.10	1.30	1.60	1.80	87	115	127	
1/8 - CD3 - 2.5 - DH - 2.5	1.3	-	0.67	0.80	0.96	1.10	1.50	1.60	2.05	2.20	106	128	142	
1/8 - CD3 - 3 - DH - 3	1.4	-	0.87	0.95	1.20	1.40	1.70	1.90	2.40	2.80	94	119	135	
1/8 - CD3 - 5 - DH - 5	1.9	1.10	1.30	1.60	1.90	2.30	2.80	3.30	3.90	4.60	113	131	147	
1/8 - CD3 - 7.5 - DH - 7.5	2.3	1.50	2.10	2.50	2.80	3.40	4.20	4.80	6.00	6.80	101	119	134	
1/8 - CD3 - 10 - DH - 10	2.6	2.00	2.70	3.30	3.80	4.50	5.50	6.40	7.80	9.00	135	145	170	
1/8 - CD3 - 15 - DH - 15	3.3	3.00	4.00	4.70	5.60	6.80	8.30	9.50	11.80	13.60	112	124	142	
1/8 - CD3 - 18 - DH - 18	3.6	3.60	4.80	5.80	6.80	8.10	10.00	11.50	18.90	16.20	128	141	160	
1/4 - CD3 - 2	1.2	-	-	0.65	0.76	0.9	1.1	1.3	1.6	1.8	87	115	134	
1/4 - CD3 - 2.5	1.3	-	0.67	0.80	0.95	1.1	1.4	1.5	2.1	2.2	106	128	142	
1/4 - CD3 - 3	1.4	-	0.80	0.95	1.10	1.4	1.7	1.9	2.5	2.8	94	119	135	
1/4 - CD3 - 5	1.9	1.00	1.30	1.50	1.90	2.3	2.8	3.2	3.9	4.6	113	131	147	
1/4 - CD3 - 10	2.6	2.00	2.70	3.30	3.80	4.5	5.5	6.4	7.8	9.0	135	145	170	
1/4 - CD3 - 15	3.3	3.00	4.00	4.70	5.60	6.8	8.3	9.5	11.8	13.6	112	125	142	
1/4 - CD3 - 20 - DH - 20	3.7	4.10	5.50	6.50	7.60	9.0	11.2	12.9	15.6	18.0	130	140	160	
3/8 - CD3 - 30 - DH - 30	4.6	6.1	8.0	9.5	11.5	13.6	16.5	19.2	23.6	27.2	120	132	145	
3/8 - CD3 - 40	5.3	8.2	10.7	12.7	15.1	18.1	22.2	25.6	31.4	36.2	130	141	162	
1/2 - CD3 - 40	5.3	8.2	10.7	12.7	15.1	18.1	22.2	25.6	31.4	36.2	130	141	162	
1/2 - CD3 - 60	6.5	2.3	16.1	19.1	22.6	27.1	33.2	38.5	47.1	54.2	127	138	155	
1/2 - CD3 - 80	7.5	16.1	21.4	25.5	30.3	36.2	44.2	51.2	62.7	72.4	130	140	151	
3/4 - CD3 - 120	9.3	24.3	32.1	38.5	45.5	54.3	66.5	77.0	94.1	109	120	130	145	
3/4 - CD3 - 210	12.3	42.6	56.2	67.2	79.5	95.0	116	134	166	190	126	138	160	
1 - CD3 - 300	14.7	60.9	80.3	95.2	114	136	166	192	235	272	137	154	163	
1 - CD3 - 450	17.9	91.3	120	144	170	205	250	290	355	410	140	156	165	

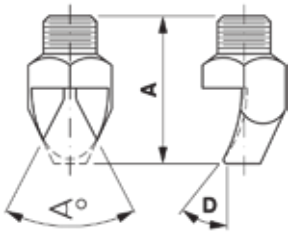
* materiali su richiesta - material on request - bajo pedido

GETTO PIATTO DEFLESSO CD4

CD4 DEFLECTED SPRAY NOZZLES
CHORRO PLANO POR DEFLEXION CD4



CD4



Caratteristiche

- Getto piatto ad alto impatto con bordi ben definiti

Applicazioni

- Lavaggi ad alto impatto
- Sgrassaggi
- Lavaggio inerti
- Abbattifoglio in cartiera

Come ordinare

Es. 1/4" CD4 20 35° INOX

Characteristics

- Very high impact flat spray nozzles with sharply defined edges

Applications

- High impact washing
- Degreasing
- Coal and gravel washing
- Shower pipes in paper industry

How to Order

E.g. 1/4" CD4 20 35° SS303

Características

- Chorro plano de fuerte impacto con bordes bien definidos

Aplicaciones

- Lavado con fuerte impacto
- Desengrase
- Lavado inerte
- Lavado en industria del papel

Para pedidos

Ej. 1/4" CD4 20 / 35° INOX

MATERIALE MATERIAL MATERIAL	ATTACCO THREAD ROSCA DE CONEXIÓN	MODELLO MODEL MODELO	ORIFIZIO FLOW ORIFICE ORIFICIO	ANGOLO ANGLE ANGULO	CODICE ARTICLE CODE CÓDIGO
I	1	CD420	-	35°	I1CD4203

TIPO DI UGELLO TYPE OF NOZZLE TIPOS DE BOQUILLAS	angolo di spruzzo spray angle angulo de aspersión			D			A MAX mm	Ø1 mm	PRESSIONE - PRESSURE - PRESIÓN (bar)						
	∠°			a	b	c			2	3	4	5	6	7	10
	a	b	c						PORTATA - CAPACITY - CAUDAL (l/min)						
1/8 - CD4 - 04	35	-	-	40	-	-	22	1.2	1.4	1.6	1.8	2.0	2.2	2.4	2.9
1/4 - CD4 - 10	50	35	15	60	36	22	30	1.9	3.2	4.0	4.6	5.0	5.5	6.1	7.1
1/4 - CD4 - 20	35	15	-	30	20	-	45	2.6	6.5	7.8	9.0	10.0	11.0	12.0	14.4
1/4 - CD4 - 40	25	-	-	25	-	-	46	3.7	12.8	15.6	18.0	20.0	22.2	24.0	29.0
3/8 - CD4 - 20	35	-	-	30	-	-	42	2.6	6.5	7.8	9.0	10.0	11.0	12.0	14.4
3/8 - CD4 - 25	50	35	-	50	28	-	48	2.9	8.1	9.9	11.2	12.5	13.8	15.0	18.0
3/8 - CD4 - 30	35	15	-	28	25	-	52	3.3	9.6	11.6	13.6	15.0	16.5	18.0	21.2
3/8 - CD4 - 40	50	40	35	45	35	26	58	3.7	12.8	15.6	18.0	20.0	22.2	24.0	29.0
3/8 - CD4 - 50	40	35	15	33	23	15	64	4.1	16.0	19.5	22.4	25.0	28.0	29.9	36.0
3/8 - CD4 - 60	50	40	-	37	33	-	72	4.5	19.1	23.0	27.0	30.0	33.0	36.2	42.8
3/8 - CD4 - 70	40	-	-	29	-	-	75	5.0	22.0	27.0	31.6	35.0	39.0	42.0	50.0
3/8 - CD4 - 80	40	-	-	26	-	-	78	5.2	26.0	31.0	36.0	40.3	44.0	48.0	57.0
3/8 - CD4 - 90	40	-	-	28	-	-	78	5.7	29.0	35.0	40.2	45.0	50.0	54.0	63.5
* 3/8 - CD4 - 100	50	50	-	40	28	-	86	6.0	32.0	40.0	46.0	50.0	55.0	61.0	71.0
* 3/8 - CD4 - 125	50	-	-	38	-	-	74	6.7	40.0	50.0	56.0	63.0	69.1	74.5	89.0
* 3/8 - CD4 - 160	50	-	-	37	-	-	74	7.5	51.0	63.0	72.0	80.0	88.2	96.0	114
* 3/8 - CD4 - 200	50	-	-	32	-	-	74	8.4	65.0	78.0	90.0	100	110	120	144
* 1/2 - CD4 - 60	35	15	-	27	14	-	125	4.5	19.1	23.0	27.0	30.0	33.0	36.2	42.8
* 1/2 - CD4 - 80	35	15	-	24	14	-	130	5.2	26.0	31.0	36.0	40.3	44.0	48.0	57.0
* 1/2 - CD4 - 100	35	15	-	19	14	-	136	6.0	32.0	40.0	46.0	50.0	55.0	61.0	71.0
* 3/4 - CD4 - 160	35	-	-	23	-	-	115	7.5	51.0	63.0	72.0	80.0	88.2	96.0	114
* 3/4 - CD4 - 200	35	15	-	22	14	-	190	8.4	65.0	78.0	90.0	100	110	120	144

* materiali su richiesta - material on request - bajo pedido

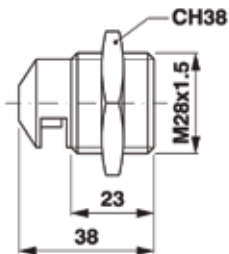
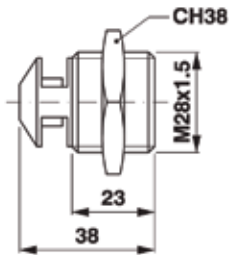


UGELLI AUTOPULENTI CD6

CD6 SELF-CLEANING NOZZLES
BOQUILLAS AUTOLIMPIANTES CD6



CD6



Caratteristiche

Getto piatto o rettilineo ben definito, buona forza d'impatto. Riducendo la pressione in linea, una molla allontana il pistoncino interno dando la possibilità di spurgare le particelle intasanti. Esecuzione in acc. inox AISI 316. Angoli di spruzzo disponibili: 0° - 45° - 60° - 80°. Questi ugelli sono inoltre disponibili con doppio spruzzo opposto: in questo caso la portata del singolo ugello indicata in tabella deve essere duplicata.

Applicazioni

- Lavaggi industriali con acque sporche e acque bianche
- Lavaggio tele e feltri in cartiera

Come ordinare

Es. CD6 3 60°

Characteristics

Well-defined flat or needle jet with high impact. Reducing the line pressure a spring retracts inside piston to purge suspended solids from the clogged nozzle. Made in stainless steel AISI 316. Available spray angles: 0° - 45° - 60° - 80°. These nozzles are also available with double opposed spray; in this case the single nozzle capacity as shown on the table must be multiplied by two.

Applications

- Dirty waters industrial washing and white waters
- Wires and felts washing in paper industry

How to Order

E.g. CD6 3 60°

Características

Chorro plano o rectilíneo bien definido con gran fuerza de impacto. Reduciendo la presión de línea, un resorte retrae el pistón interior, dando así la posibilidad de purgar las partículas que hayan obstruido el orificio. Material: Inox 316. Angulos de aspersión posibles: 0° - 45° - 60° - 80°. Estas boquillas están además disponibles con doble rociado opuesto: en este caso, se debe duplicar la capacidad de cada boquilla indicada en la tabla.

Aplicaciones

- Lavado industrial con agua impura o calcárea
- Lavado de fieltros y telas para papeleras

Para pedidos

Ej. CD6 3 60°

MATERIALE MATERIAL MATERIAL	ATTACCO THREAD ROSCA DE CONEXIÓN	MODELLO MODEL MODELO	ORIFIZIO FLOW ORIFICE ORIFICIO	ANGOLO ANGLE ANGULO	CODICE ARTICLE CODE CÓDIGO
O	-	CD63	-	60°	CD636

TIPO DI UGELLO TYPE OF NOZZLE TIPOS DE BOQUILLAS	PRESSIONE - PRESSURE - PRESIÓN (bar)							
	3	5	10	15	20	30	40	60
	PORTATA - CAPACITY - CAUDAL (l/min)							
CD6 - 1	1.0	1.3	1.8	2.2	2.6	3.1	3.6	4.4
CD6 - 2	3.3	4.2	6.1	7.5	8.6	10.5	12.2	15.0
CD6 - 3	4.5	5.8	8.4	10.3	11.9	14.5	16.8	20.6
CD6 - 4	7.5	9.7	14.0	17.1	19.8	24.2	28.0	34.3
CD6 - 5	9.7	12.5	17.9	21.9	25.3	31.0	35.8	44.0
CD6 - 6	11.5	14.6	21.0	25.7	29.7	36.4	42.0	51.5
CD6 - 7	12.1	15.5	22.1	27.0	31.2	38.2	44.2	54.2
CD6 - 8	13.9	18.2	25.4	31.0	36.0	44.0	51.0	62.3



UGELLI A GETTO PIATTO FLAT SPRAY NOZZLES BOQUILLAS DE CHORRO PLANO

UGELLI PER ARIA E VAPORE C5 - CD3

C5 - CD3 AIR AND STEAM NOZZLES
BOQUILLAS PARA AIRE Y VAPOR C5-CD3

Caratteristiche

- Ugelli a testina intercambiabile C5 o a corpo unico CD3 per spruzzo di aria o vapore
- Tipo C5 assemblabile con gli accessori

Characteristics

- C5 interchangeable spray tip or CD3 one piece nozzle to use with air or steam
- C5 type can be assembled with accessories

Características

- Boquillas con orificio intercambiabile C5 o de una sola pieza CD3 para pulverización de aire o de vapor
- El tipo C5 se puede montar con los accesorios

Come ordinare

Es. 1/4" MC5 -1 OTTONE

How to Order

E.g. 1/4" MC5 -1 BRASS

Para pedidos

Ej. 1/4" MC5 1 LATON



CD3



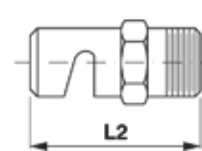
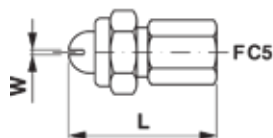
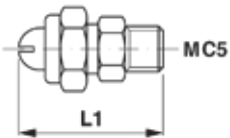
C5

MATERIALE MATERIAL MATERIAL	ATTACCO THREAD ROSCA DE CONEXIÓN	MODELLO MODEL MODELO	ORIFIZIO FLOW ORIFICE ORIFICIO	ANGOLO ANGLE ANGULO	CODICE ARTICLE CODE CÓDIGO
-----------------------------------	----------------------------------------	----------------------------	--------------------------------------	---------------------------	----------------------------------

O 1 MC51 - - O1MC51

DIMENSIONI - DIMENSIONS - DIMENSIONES (mm)

Ø	L	L1	L2 max
1/8	-	-	31
1/4	46	48	34
3/8	46	48	45



TIPO DI UGELLO TYPE OF NOZZLE TIPOS DE BOQUILLAS	W mm	PRESSIONE - PRESSURE - PRESIÓN (bar)								bar	
		1	2	3	4	5	6	7	10	1	4
		Aria - Air - Aire (l/min)				Vapore - Steam - Vapor (kg/h)				°	°
1/4 F - C5 - 1	0.20	21	38	65	101	0.7	1.4	2.2	3.60	65	85
1/4 F - C5 - 2	0.38	40	60	100	152	1.5	2.0	3.5	5.50	70	80
1/4 F - C5 - 3	0.58	77	110	190	305	2.8	4.1	6.7	11.5	80	80
1/4 F - C5 - 4	1.1	131	199	345	540	4.5	7.2	12.3	19.4	70	70
1/4 F - C5 - 5	1.1	210	335	570	881	7.50	12.0	20.3	32.1	60	70
1/4 F - C5 - 6	2.3	430	700	1150	1724	15.5	25.0	42.0	63.0	60	70
3/8 F - C5 - 1	0.20	21	38	65	101	0.7	1.4	2.2	3.60	65	85
3/8 F - C5 - 2	0.33	40	60	100	152	1.5	2.0	3.5	5.50	70	80
3/8 F - C5 - 3	0.58	77	110	190	305	2.8	4.1	6.7	11.5	80	80
3/8 F - C5 - 4	1.1	131	199	345	540	4.5	7.2	12.3	19.4	70	70
3/8 F - C5 - 5	1.1	210	335	570	881	7.50	12.0	20.3	32.1	60	70
3/8 F - C5 - 6	2.3	430	700	1150	1724	15.5	25.0	42.0	63.0	60	70

TIPO DI UGELLO TYPE OF NOZZLE TIPOS DE BOQUILLAS	Ø1 mm	PRESSIONE - PRESSURE - PRESIÓN (bar)								bar			
		0.7	1.5	2	3	3.5	0.7	1.5	2	3	3.5	0.7	3.5
		Aria - Air - Aire (l/min)				Vapore - Steam - Vapor (kg/h)				°	°		
* 1/8 - CD3 - 0.50	0.6	4.5	6.5	7.6	10.5	11.5	0.15	0.23	0.26	0.37	0.40	17	39
* 1/8 - CD3 - 0.75	0.75	6.1	9.0	10.8	14.7	16.6	0.23	0.33	0.39	0.52	0.60	20	44
* 1/8 - CD3 - 1	0.8	9.50	13.7	16.5	22.0	25.0	0.35	0.50	0.59	0.80	0.91	23	48
1/8 - CD3 - 1.5	1.0	15.3	22.0	26.0	36.0	40.0	0.55	0.78	0.95	1.30	1.50	25	51
1/8 - CD3 - 2	1.2	19.3	28.0	33.0	45.0	51.0	0.68	1.10	1.25	1.60	1.80	32	55
1/8 - CD3 - 3	1.4	31.0	46.0	55.0	77.0	85.0	1.10	1.70	2.00	2.70	3.10	33	60
1/8 - CD3 - 5	1.9	54.0	76.0	91.0	125	139	1.90	2.70	3.30	4.50	5.00	39	64
1/8 - CD3 - 7.5	2.3	80.0	117	140	190	210	3.00	4.10	5.00	6.80	7.50	39	68
1/8 - CD3 - 10	2.6	110	160	190	255	290	3.90	5.70	6.80	9.20	10.5	39	70
1/8 - CD3 - 15	3.3	180	261	310	420	475	6.50	9.30	11.2	15.0	17.1	41	72
1/8 - CD3 - 18	3.6	205	300	355	485	540	7.50	10.6	12.7	17.5	19.6	44	74
1/4 - CD3 - 20	3.6	225	325	386	520	590	8.10	11.5	13.7	18.7	20.9	46	78
3/8 - CD3 - 30	4.6	320	465	560	760	850	11.5	16.8	20.0	27.0	30.0	53	81
3/8 - CD3 - 40	5.3	440	640	760	1050	1160	15.7	22.8	27.0	36.8	42.0	58	85

* materiali su richiesta - material on request - bajo pedido