



**ABS shock
proof drum**

**in painted
steel or in
AISI 304
stainless
steel**

Industrial hose reel suitable also for out-door workplaces with ABS shock proof drum, available in open or enclosed version with arms and bracket in painted steel or in AISI 304 stainless steel.



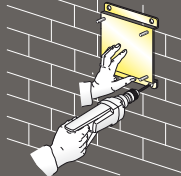
TechSpray



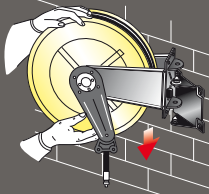
- The template supplied, facilitates drilling of the holes and therefore hose reel fixing.



- The quick coupling support that facilitates installation in battery is available on request.



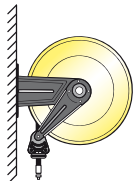
- The quick coupling adjustable support that enables 40° rotation to the right or left of the hose reel is available on request.



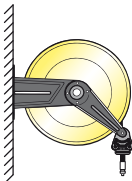
example of installation

The adjustable arms can be easily repositioned according to needs

● Standard installation



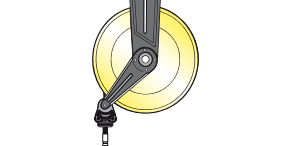
● Wall installation



● Bench installation



● Ceiling installation



20 bar Air-Water

Galvanized BSP joints

BRASS SWIVEL JOINT - "VITON" SEALS

Article	Delivery hose	Ø Hose	Inlet connection	Outlet connection
4430/10	/	/	F 1/2"G	F 1/2"G
4430/11	15m (962/15)	1/2"	F 1/2"G	M 1/2"G
4430/12	12m (952/13)	3/8"	F 1/2"G	M 3/8"G
4430/13	18m (952/19)	3/8"	F 1/2"G	M 3/8"G
4430/14	10m (962/10)	1/2"	F 1/2"G	M 1/2"G

100 bar Water till 130° C

Galvanized BSP joints

STAINLESS STEEL AISI 304 SWIVEL JOINT - "VITON" SEALS

Article	Delivery hose	Ø Hose	Inlet connection	Outlet connection
4430/20	/	/	F 1/2"G	F 1/2"G
4430/21	10m (963/12)	1/2"	F 1/2"G	M 1/2"G
4430/22	15m (963/14)	1/2"	F 1/2"G	M 1/2"G
4431/22	15m (964/15)	1/2"hygienic	F 1/2"G	M 1/2"G

200 bar Water till 130° C

Galvanized BSP joints

STAINLESS STEEL AISI 304 SWIVEL JOINT - "VITON" SEALS

Article	Delivery hose	Ø Hose	Inlet connection	Outlet connection
4430/30	/	/	F 3/8"G	F 1/2"G
4430/31	12m (995/12)	3/8"	F 3/8"G	F 3/8"G
4430/32	18m (995/18)	3/8"	F 3/8"G	F 3/8"G
4431/32	18m (956/18)	3/8"hygienic	F 3/8"G	F 3/8"G

150 bar Oil-Antifreeze and allied products

Galvanized BSP joints

CARBON STEEL SWIVEL JOINT - "POLYURETHANE" SEALS

Article	Delivery hose	Ø Hose	Inlet connection	Outlet connection
4430/40	/	/	F 1/2"G	F 1/2"G
4430/41	10m (963/11)	1/2"	F 1/2"G	M 1/2"G
4430/42	15m (963/15)	1/2"	F 1/2"G	M 1/2"G

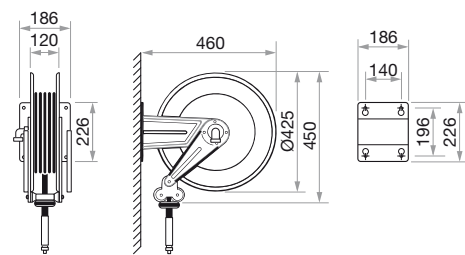
600 bar Grease

Galvanized BSP joints

CARBON STEEL SWIVEL JOINT - "POLYURETHANE" SEALS

Article	Delivery hose	Ø Hose	Inlet connection	Outlet connection
4430/50	/	/	F 3/8"G	F 1/2"G
4430/51	12m (935/13)	1/4"	F 3/8"G	M 1/4"G
4430/52	18m (935/18)	1/4"	F 3/8"G	M 1/4"G
4430/55	10m (957/10)	3/8"	F 3/8"G	M 1/4"G
4430/56	15m (957/15)	3/8"	F 3/8"G	M 1/4"G

OVERALL DIMENSIONS



📦 N° 1 packing m³ 0,086 📦 from kg 14 to 24

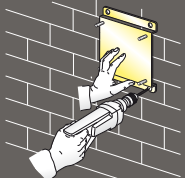
THE HOSE REELS ARE EQUIPPED WITH A UNIVERSAL HOSE STOP; THOSE WITH HOSE ARE PROVIDED WITH A 0,6 M INLET CONNECTION HOSE.



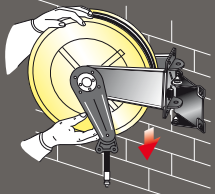
- The template supplied, facilitates drilling of the holes and therefore hose reel fixing.



- The quick coupling support that facilitates installation in battery is available on request.



- The quick coupling adjustable support that enables 40° rotation to the right or left of the hose reel is available on request.



20 bar Air-Water

Galvanized BSP joints

BRASS SWIVEL JOINT - "VITON" SEALS

Article	Delivery hose	Ø Hose	Inlet connection	Outlet connection
4432/10	/	/	F 1/2"G	F 1/2"G
4432/11	15m (962/15)	1/2"	F 1/2"G	M 1/2"G
4432/12	12m (952/13)	3/8"	F 1/2"G	M 3/8"G
4432/13	18m (952/19)	3/8"	F 1/2"G	M 3/8"G
4432/14	10m (962/10)	1/2"	F 1/2"G	M 1/2"G

100 bar Water till 130° C

Galvanized BSP joints

STAINLESS STEEL AISI 304 SWIVEL JOINT - "VITON" SEALS

Article	Delivery hose	Ø Hose	Inlet connection	Outlet connection
4434/20	/	/	F 1/2"G	F 1/2"G
4432/21	10m (963/12)	1/2"	F 1/2"G	M 1/2"G
4432/22	15m (963/14)	1/2"	F 1/2"G	M 1/2"G
4433/22	15m (964/15)	1/2"hygienic	F 1/2"G	M 1/2"G

200 bar Water till 130° C

Galvanized BSP joints

STAINLESS STEEL AISI 304 SWIVEL JOINT - "VITON" SEALS

Article	Delivery hose	Ø Hose	Inlet connection	Outlet connection
4434/30	/	/	F 3/8"G	F 1/2"G
4432/31	12m (995/12)	3/8"	F 3/8"G	F 3/8"G
4432/32	18m (995/18)	3/8"	F 3/8"G	F 3/8"G
4433/32	18m (956/18)	3/8"hygienic	F 3/8"G	F 3/8"G

150 bar Oil-Antifreeze and allied products

Galvanized BSP joints

STEEL AISI 304 SWIVEL JOINT - "VITON" SEALS

Article	Delivery hose	Ø Hose	Inlet connection	Outlet connection
4434/20	/	/	F 1/2"G	F 1/2"G
4432/41	10m (963/11)	1/2"	F 1/2"G	M 1/2"G
4432/42	15m (963/15)	1/2"	F 1/2"G	M 1/2"G

600 bar Grease

Galvanized BSP joints

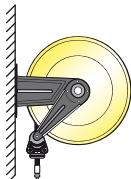
CARBON STEEL SWIVEL JOINT - "POLYURETHANE" SEALS

Article	Delivery hose	Ø Hose	Inlet connection	Outlet connection
4432/50	/	/	F 3/8"G	F 1/2"G
4432/51	12m (935/13)	1/4"	F 3/8"G	M 1/4"G
4432/52	18m (935/18)	1/4"	F 3/8"G	M 1/4"G
4432/55	10m (957/10)	3/8"	F 3/8"G	M 1/4"G
4432/56	15m (957/15)	3/8"	F 3/8"G	M 1/4"G

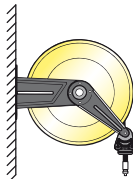
example of installation

The adjustable arms can be easily repositioned according to needs

● Standard installation



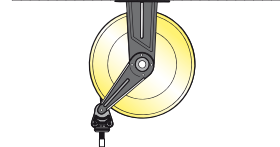
● Wall installation



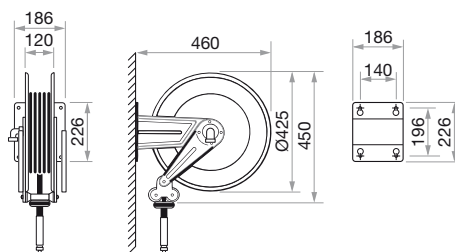
● Bench installation



● Ceiling installation



OVERALL DIMENSIONS



📦 N° 1 packing m³ 0,086 📦 from kg 14 to 24

THE HOSE REELS ARE EQUIPPED WITH A UNIVERSAL HOSE STOP; THOSE WITH HOSE ARE PROVIDED WITH A 0,6 M INLET CONNECTION HOSE.

Painted steel enclosed industrial hose reel with ABS shock proof drum Series 440

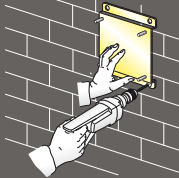


This series includes a range of **enclosed hose reels, with ABS shock proof drum** and painted steel carter designed to be used in those sectors that due to environmental conditions, technical or aesthetical reasons require enclosed hose reel application.

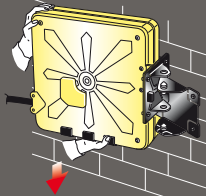
- The template supplied, facilitates drilling of the holes and therefore hose reel fixing.



- The quick coupling support that facilitates installation in battery is available on request.



- The quick coupling adjustable support that enables 40° rotation to the right or left of the hose reel is available on request.



20 bar Air-Water

Galvanized BSP joints

BRASS SWIVEL JOINT - "VITON" SEALS

Article	Delivery hose	Ø Hose	Inlet connection	Outlet connection
4440/10	/	/	F 1/2"G	F 1/2"G
4440/11	15m (962/15)	1/2"	F 1/2"G	M 1/2"G
4440/12	18m (952/19)	3/8"	F 1/2"G	M 3/8"G
4440/13	10m (962/10)	3/8"	F 1/2"G	M 3/8"G
4440/14	15m (962/15)	1/2"	F 1/2"G	M 1/2"G

150 bar Oil-Antifreeze and allied products

Galvanized BSP joints

CARBON STEEL SWIVEL JOINT - "POLYURETHANE" SEALS

Article	Delivery hose	Ø Hose	Inlet connection	Outlet connection
4440/40	/	/	F 1/2"G	F 1/2"G
4440/41	10m (963/11)	1/2"	F 1/2"G	M 1/2"G
4440/42	15m (963/15)	1/2"	F 1/2"G	M 1/2"G

600 bar Grease

Galvanized BSP joints

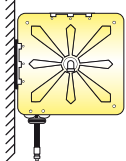
CARBON STEEL SWIVEL JOINT - "POLYURETHANE" SEALS

Article	Delivery hose	Ø Hose	Inlet connection	Outlet connection
4440/50	/	/	F 3/8"G	F 1/2"G
4440/51	12m (935/13)	1/4"	F 3/8"G	M 1/4"G
4440/52	18m (935/18)	1/4"	F 3/8"G	M 1/4"G
4440/55	10m (957/10)	3/8"	F 3/8"G	M 1/4"G
4440/56	15m (957/15)	3/8"	F 3/8"G	M 1/4"G

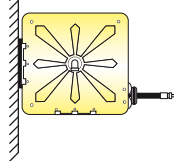
example of installation

It is possible to fix wall bracket on different side according to needs

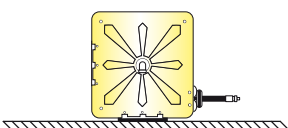
● Standard installation



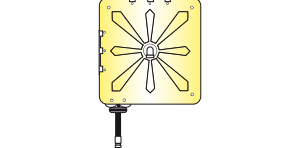
● Wall installation



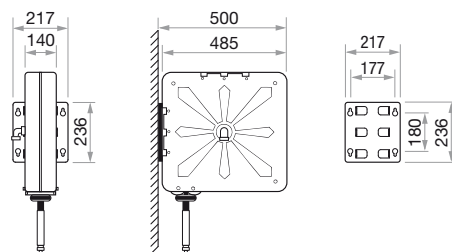
● Bench installation



● Ceiling installation



OVERALL DIMENSIONS



📦 N° 1 packing m³ 0,111 📦 from kg 24 to 29

THE HOSE REELS ARE EQUIPPED WITH A UNIVERSAL HOSE STOP; THOSE WITH HOSE ARE PROVIDED WITH A 0,6 M INLET CONNECTION HOSE.

Modular drip-tray for hose reel



Art. 900
Modular drip-tray for hose reel: equipped with gun hook and removable tray. Indispensable, applied under any hose reel for holding the gun, and for keeping the wall and place clean and safe.



Art. 430/08
Latch mechanism protective cover rack side hose reels Serie 430.

Fixed brackets for quick installation available on request.



Art. 430/01
Fixed bracket in steel for fixed hose reels in painted steel Series 430.



Art. 430/02
Fixed bracket in AISI 304 stainless steel for fixed hose reels in stainless steel, Series 430.

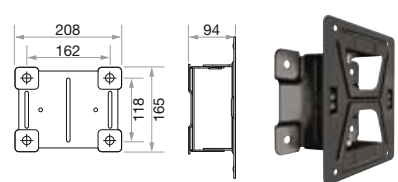


Art. 440/01
Fixed bracket in steel for fixed enclosed hose reels in painted steel Series 440.

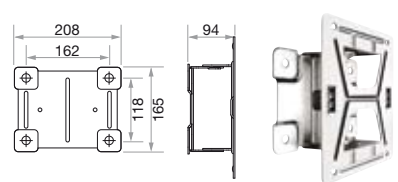


● The **quick coupling support** that facilitates hooking of the single hose reel and optimises its installation in battery (i.e. with several hose reels side by side) is available on request.

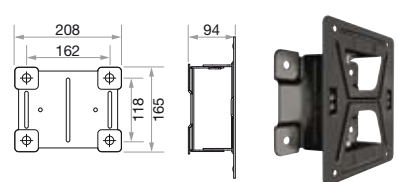
Swivelling brackets for quick installation available on request.



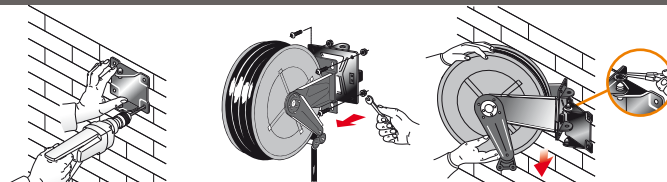
Art. 430/05
Swivelling brackets in steel for fixed hose reels in painted steel Series 430.



Art. 430/06
Swivelling brackets in AISI 304 stainless steel for fixed hose reels in stainless steel Series 430.



Art. 440/05
Swivelling brackets in steel for fixed enclosed hose reels in painted steel Series 440.



● The **quick coupling adjustable support** facilitates hose reel installation and enables 40° rotation to the right or left or locking in fixed position at 0° by means of clamping with two screws is available by request.